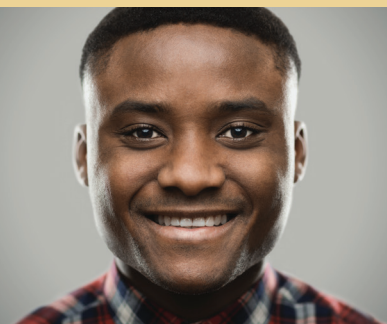




**1 IN 5 OF LAKE COUNTY'S**  
target businesses has  
directly benefited from  
the services of the Lake  
County Workforce  
Ecosystem.

**"SUBURBAN OFFICES ARE COOL AGAIN**  
& Companies Don't Have to  
Head Downtown to Woo  
Millennials Anymore" –  
Bloomberg article featuring  
Lake County, October 2017.



**"LAKE COUNTY WAS AN EASY CHOICE FOR US**  
because of the number of medical device  
companies that are currently headquartered there,  
as well as our ability to recruit technical talent."  
– Jim Fitzgerald, CEO, Flexan Corporation,  
in Crain's Chicago Business, September 2017.

**"LAKE COUNTY HAS ALL OF THE**  
traits of a great place to live."  
– Matt Carmichael, Author &  
Demographics Expert, to a sold-  
out crowd of 500+ community  
leaders at The Big Event.



**OVER 1,100 LAKE COUNTY**  
high school students attended  
career expos and internship  
fairs in 2017 to explore  
careers with local companies  
in STEM, Manufacturing,  
Healthcare and more.

**"THIS SITE GIVES OUR EMPLOYEES MANY OPTIONS TO LIVE IN EITHER AN**  
urban or suburban environment. We know we have to compete  
for the best talent to grow our company, and this location will  
appeal to our diverse, global team, today and in the future."  
– Jim Umpleby, CEO, Caterpillar, on the company's decision  
to locate its global headquarters in Lake County.

**"SOME IN THE SUBURBS**  
[like Lake County Partners]  
espouse a broader approach to  
attracting and retaining business  
and industry, which we support."  
– Daily Herald Editorial Board,  
August 2017.



**OVER 150 COLLEGE STUDENTS**  
and 28 companies took part  
in the first Lake County  
Engineering Internship Fair,  
attracting young STEM  
talent to the area.



## WE'RE YOUR LAKE COUNTY PARTNER FOR BUSINESS.

*With the generous support of our investors, Lake County Partners has strategically worked to advance important economic development initiatives focused on business growth through talent attraction and development, business expansion and attraction, stakeholder coordination and public outreach.*

### GROWING THE TALENT ECONOMY

Lake County's workforce directly fuels its economy by driving innovation, supporting business growth and attracting new companies in search of talent. This is why workforce development is at the core of Lake County Partners' strategy. Since the inception of the Lake County "Workforce Ecosystem," we have teamed up with stakeholders such as Lake County Workforce Development and the College of Lake County to understand business challenges and assemble solutions that meet local needs. As a result, we have streamlined our processes of information sharing, shaped curriculum to equip workers with in-demand skills, and invested in Lake County's next generation of workers through career and internship fairs and a targeted focus on the quality of life that Lake County can provide for young professionals.

### EXCELLING IN EXPERIENCE

Over the past several years, Lake County has benefited from a growth surge in critical industries including Manufacturing, Healthcare, Professional and Technology Services and Biopharma. Companies in these industries have been driving our significant, and regionally unique job growth. Recent business expansions and relocations have included:

- Caterpillar's decision to move its global headquarters to Deerfield
- Medical device manufacturer Flexan, LLC's move to a 70,000 sq. ft. Lincolnshire facility
- Rosalind Franklin University of Medicine and Science's investment in a new Innovation and Research Park in North Chicago
- Amazon's opening of a new 625,848 sq. ft. warehouse in Waukegan
- Global metal working firm Okabe's \$13 million investment in a new 133,000 sq. ft. facility in Grayslake
- Medical device manufacturer Nypro's expansion to double the size of its facility to 170,000 sq. ft. in Gurnee
- Global leader Sysmex America's development of an expanded state-of-the-art reagent manufacturing facility to increase production capacity by 80% in Mundelein

### INVESTING IN PEOPLE & OUR COMMUNITIES

Lake County's promise to deliver a rewarding life both in and outside of the office continues to be a key driver of economic development. We leverage our wide audience to promote and amplify local success stories. We also regularly host events for stakeholders to provide the insights that they need to continue to build vibrant communities, attract top talent and forge lasting relationships with Lake County's employers.

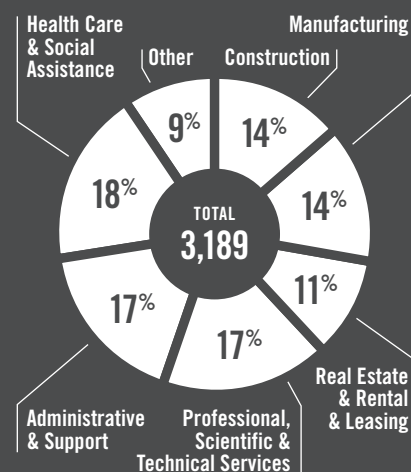
## WORKFORCE ECOSYSTEM CONNECTIONS

**215** Partner  
Connections

**675** New  
Employees  
Hired

**639** Existing  
Employees  
Trained

## JOB GROWTH IN KEY SECTORS 2015-2017



## THE LAKE COUNTY PROMISE

