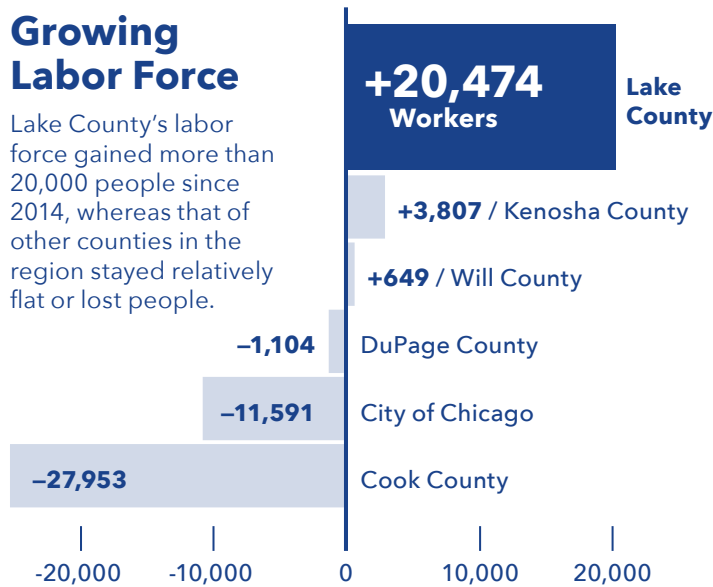


2019 IN REVIEW

Thanks to the generous support of investors, Lake County Partners is the driving force behind economic development in Lake County. Through our close work with the business community, we have developed a set of tools, partnerships and programs that meet the needs of today and anticipate the needs of tomorrow.

Growing Labor Force

Lake County's labor force gained more than 20,000 people since 2014, whereas that of other counties in the region stayed relatively flat or lost people.



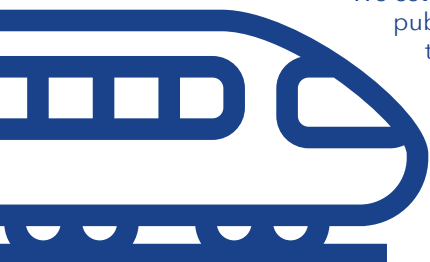
Strategic Initiatives with Impact

We led strategic initiatives that landed more than 20 projects, creating nearly 2,500 jobs and retaining 1,500 jobs with a total investment of more than \$260 million and an annual economic impact of more than \$550 million.

20
— PROJECTS —
4000
— JOBS —

Gamechanging New Train Reverse-Commute Schedule

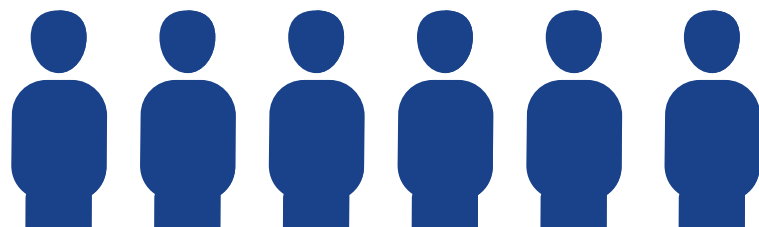
We established a groundbreaking public-private partnership that successfully launched MetraMore, a gamechanging new train reverse-commute schedule on Metra's Milwaukee District North Line that makes it easier than ever for businesses to attract talent from downtown.



Largest "Big Event" in History

We hosted our largest "Big Event" in history, bringing together 500+ business and civic leaders for unparalleled networking opportunities, expert insights and important business updates.

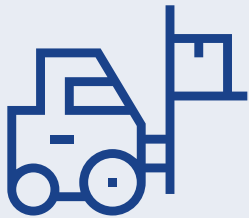
500+ BUSINESS LEADERS



2019 AT A GLANCE

Fischer Paper Products Built 162,000 Sq. Ft. Facility in Antioch Corporate Center

Third-generation advanced manufacturer Fischer Paper Products worked closely with Lake County Partners and the Village of Antioch to expand in Lake County and construct a state-of-the-art 162,000 sq. ft. facility in the Antioch Corporate Center.



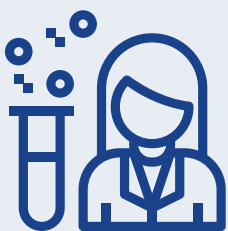
Harger Lightning and Grounding Expanded by 30%

Harger Lightning and Grounding, a lightning protection systems manufacturer located in Grayslake, worked with village officials to cement an agreement to

expand by 30% and hire another 20 people to build on its local success.

Astronics Moved Operations and Subsidiary Manufacturing to Waukegan

Astronics, a leading provider of technologies for global aerospace, defense and mission-critical industries, moved operations and manufacturing for its subsidiary, Astronics Connectivity Systems and Certifications, into a 167,000 sq. ft. facility in Waukegan to meet market demands.



AveXis Expanded to 100,000 Sq. Ft. Facility in Innovation Park

AveXis, a newly acquired division of Novartis focused on cutting-edge gene therapy, expanded into nearly 100,000 sq. ft. at Innovation Park in Libertyville, joining other breakthrough innovators like Valent Biosciences and Brightstar.

Country's Largest Maker of Eyewear Doubled Factory Footprint

Following its acquisition of AO Eyewear, a prominent former division of the oldest optical company in the country, Vernon Hills-based State Optical Co. more than doubled the factory's footprint to manufacture the product in Lake County and build on the company's unique distinction as the largest maker of eyewear in the country.

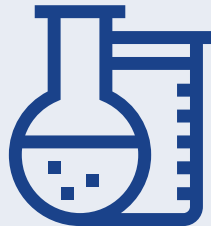
Lake County Tourism Continued to Support Job Growth

Illinois set a new tourism record for the 8th year in a row. Lake County continues to be one of the top destinations in the state, supporting nearly 11,000 jobs each year, which accounts for more than \$300 million in payroll—a number that has grown 16% since 2013.



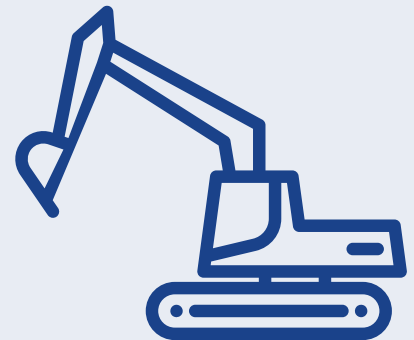
Advanced Clinical Selected Deerfield for Expansion

Advanced Clinical, a life sciences-focused clinical development organization, announced its decision to expand in Deerfield instead of Chicago's Loop to keep costs low and tap into Lake County's skilled workforce.



Alter Launched Cornerstone Development

Alter launched Cornerstone, a 600-acre industrial development in Grayslake, and broke ground on a 1.4 million sq. ft. distribution center for Medline, one of the world's largest medical supply companies.



Lake County Continued to Develop Local Talent Pipeline with Internship/Job Program

The popular Lake County Engineering Internship & Job Fair headed into its fourth year, giving local companies access to hundreds of Midwestern college students in search of rewarding career opportunities in Lake County.

